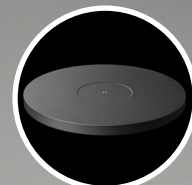




NEW Pick it MM EVO cartridge



Low-friction, precision aluminium tonearm bearing



Heavy diecast & damped aluminium platter

Debut EVO 2

The next generation

MSRP 699 € (incl. VAT)

- **NEW** pre-adjusted Pick it MM EVO cartridge
- **NEW** 1,7kg aluminium platter with TPE damping
- **NEW** low-friction, precision tonearm bearing
- **NEW** beautiful satin wine red finish
- **NEW** TPE damped counterweight
- 8,6" one-piece conical carbon tonearm
- Motor suspension with better damping
- Height-adjustable metal feet
- Electronic speed switch
- Precision belt drive with electronic speed control
- 8x hand-painted MDF chassis
- Premium semi-symmetrical phono cable
- Gold plated RCA connectors
- Premium acrylic dust cover included
- Handmade in Europe

Real-wood veneer: 

High gloss: 

Satin: 

Speed: 33, 45 (electronic speed change)
Drive principle: belt drive with electronic speed control
Platter: 300mm, die cast aluminium platter with TPE damping and felt mat
Platter bearing: stainless steel axle in bronze bushing
Wow & flutter: 33: +/-0,16%; 45: +/-0,14%
Speed drift: 33: +/-0,40%; 45: +/-0,50%
Signal to noise: 68dB
Tonearm: 8,6" one-piece carbon tonearm
Effective arm length/mass: 218,5 mm / 10,0 g
Overhang: 18,5mm
Included accessories: 15V DC / 0,8A power supply, dust cover, 7" single adapter
Power consumption: 4W / 0W standby
Dimensions: 415 x 113 x 320mm (WxHxD)
Weight: 6 kg net

Premium Tonearm

The Debut EVO 2 turntable features a premium 8,6" carbon fiber tonearm with a massive aluminium bearing construction. The low friction tonearm bearing guarantees precise, stable and accurate tracking. Carbon gives the tonearm a high degree of rigidity while keeping the weight really low.

The one-piece arm and headshell design prevents unwanted resonances and offers a solid physical bond to the cartridge.

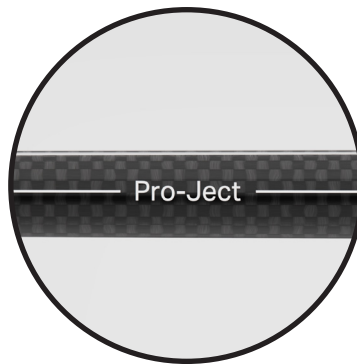
The new TPE damped counterweight reduces arm-cartridge resonances by as much as 50%.

This superb built tonearm delivers an insane sound quality with a convincing sound stage.



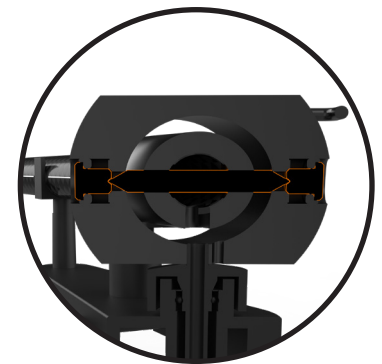
Correct adaptive anti-skating mechanism

As the skating force varies between the inner and outer grooves of the vinyl record, our anti-skating mechanism adjusts accordingly.



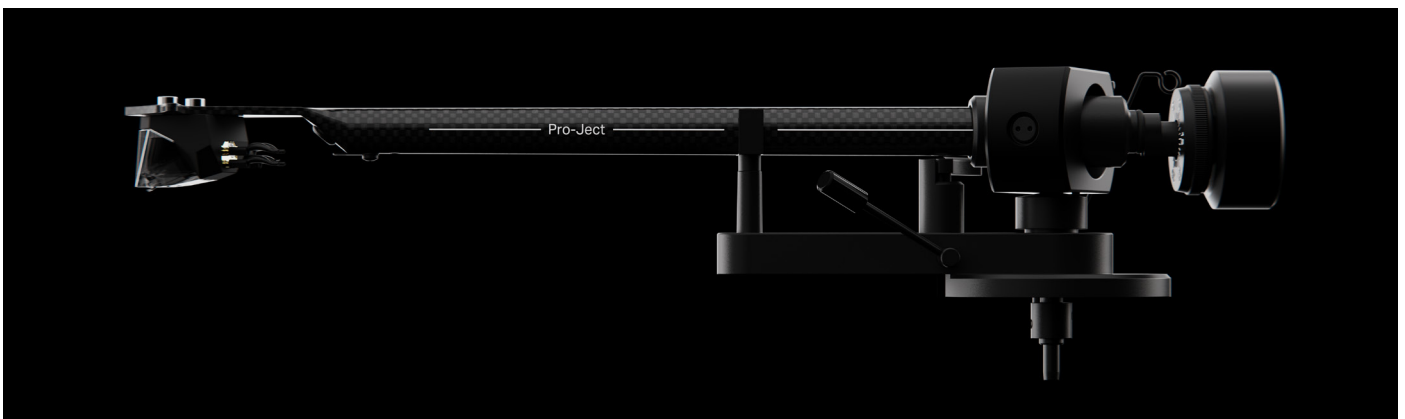
Carbon fiber tonearm tube

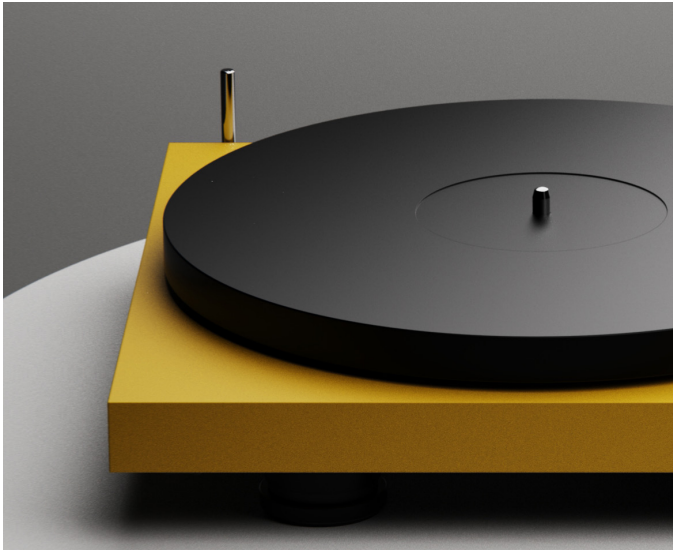
Super stiff and lightweight one-piece conical 8,6" carbon tonearm design.



Massive low friction pin point bearing

The massive precise CNC milled alu tonearm bearing block absorbs all unwanted resonances coming from the cartridge.





Heavy damped aluminium platter

The heavy 1,7 kg die-cast aluminum platter gets reworked and precision balanced in an extra step to obtain a perfect platter.

The heavy aluminum platter has a ring made of TPE (thermoplastic elastomer) on the inside that helps to dampen all resonances and thus minimize wow and flutter.

The Debut EVO 2 platter is anti-magnetic, which allows you to use MC cartridges and upgrade to our True Balanced Connection technology.

Our separately available Record Puck E provides an extra level of damping and stability, so it is the perfect add-on for your Debut EVO 2.

1,7kg die-cast aluminium



Top view

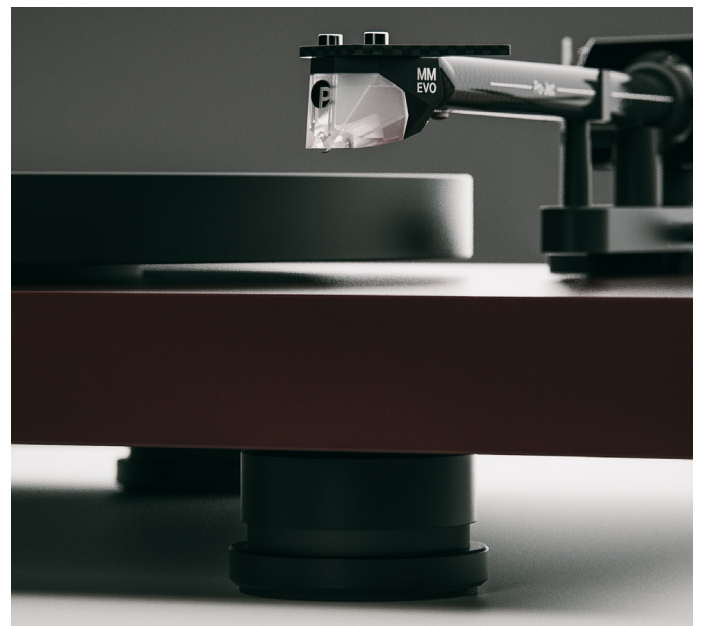
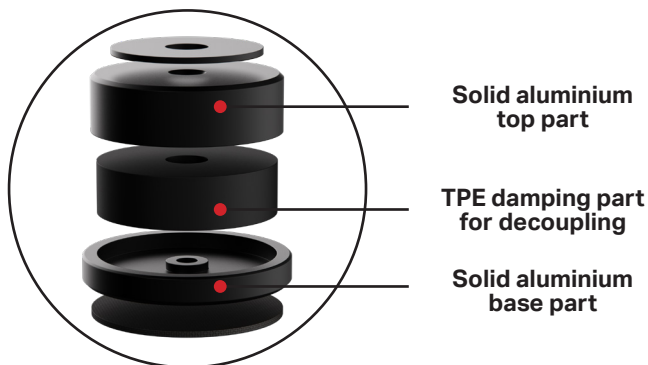
TPE damping ring



Bottom view

Height adjustable damped feet

The new Debut EVO 2 stands on three height adjustable damped feet to guarantee the perfect stand. By using 3 feet we are able to increase the stability on uneven surfaces, because a perfectly level turntable is essential for real high-end sound.





The new Pick it MM EVO

The new superior high dynamic 7mV output Pick it MM EVO cartridge completes the Debut EVO 2 in all respects. It doesn't only complement the light-weight tonearm sound-wise, it also looks stunning on the turntable.

Our phono specialists again teamed up with the cartridge experts at Ortofon from Denmark to work on this new cartridge. The cartridge is made from a unique combination of technologies. One of which is Ortofon's well known split pole pins. This enables it to have a flat frequency response, which is comparable to MC cartridges.

High quality phono cable

Cables are not able to make your sound system sound better, but they ensure that every detail and information of the signal is transmitted to the dedicated receiving device.

The included Connect it Phono E RCA is a high quality phono optimized cable. We focused on quality core materials like a copper conductor for a loss-less signal transmission.

Upgrade to TRUE BALANCED

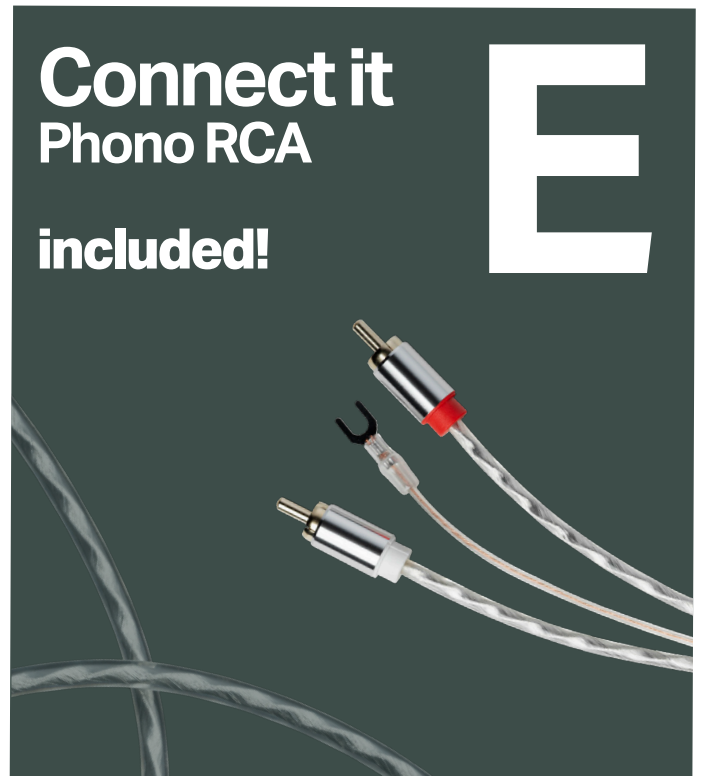


Use your Debut EVO 2 in balanced configuration to ignite the full potential!

Get your True Balanced cable now!

Contact your dealer for more information or go to:

www.project-audio.com/connect-it



**To use our True Balanced Connection, your Debut EVO 2 needs to be equipped with an MC cartridge or Pick it PRO Balanced.*



Phono Box S3 B

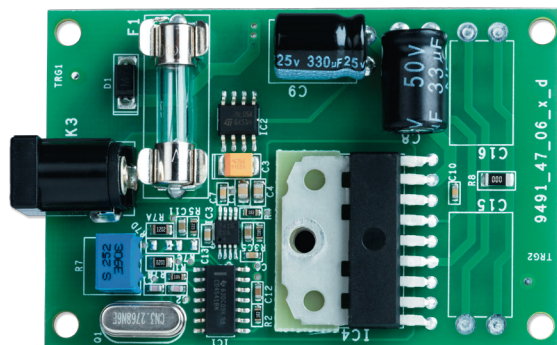


Phono Box DS3 B

Sophisticated DC/AC power generator

In all our turntables, we use a "cheap looking" switch mode power supply. We do this, as we use a precision DC-driven AC generator inside the turntable, which powers the motor.

With this we create a completely clean new sine wave. This guarantees very clean power which results in less motor vibrations and therefore a more accurate sound reproduction.



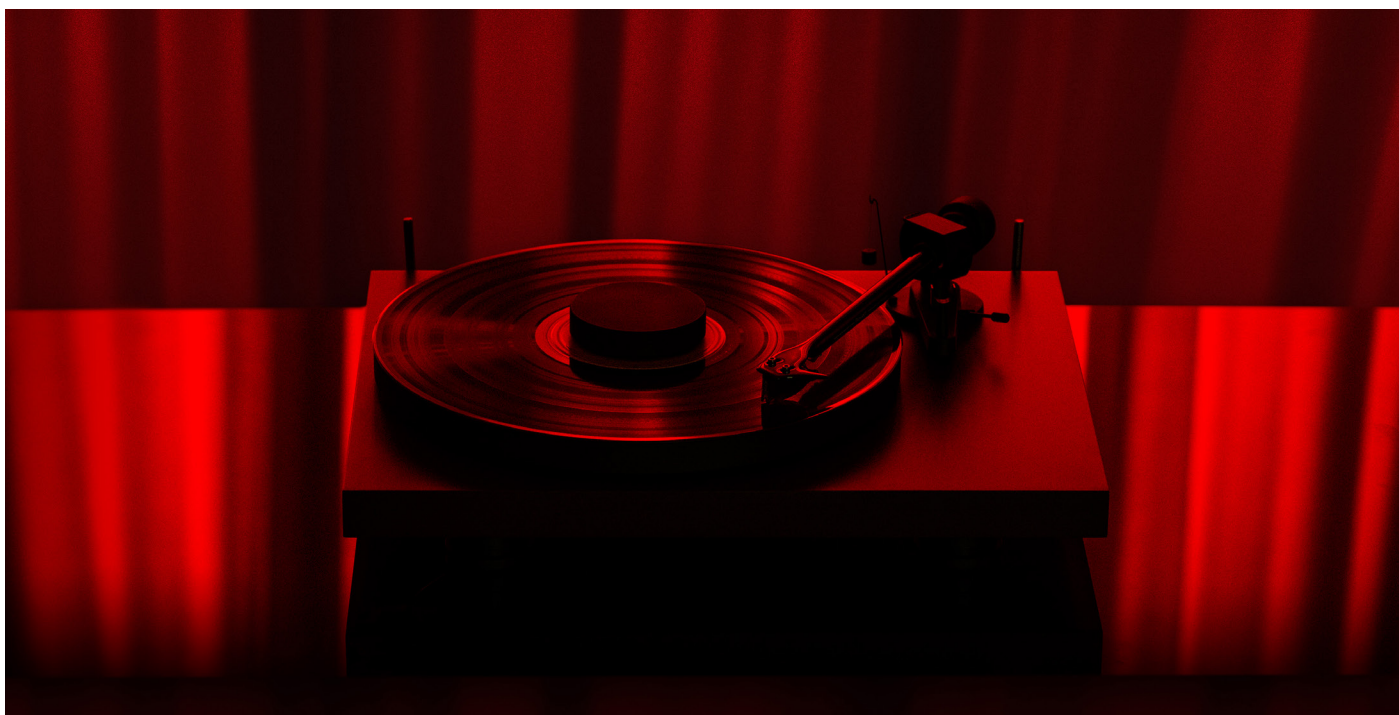
The upgrade for your phono setup

A clean and stable power is necessary for your phono setup. The included power supply is already a good base, but we want to go further.

The **Power Box S3 Phono** provides power for the Debut EVO 2 and also a Pro-Ject phono preamp. Its two outputs are specifically engineered to power Pro-Ject turntables and phono preamps.

The sophisticated DC filtration can have a dramatic impact on the sound quality.

In addition to the sound improvements, Power Box S3 Phono also offers its users a cleaner cable solution, avoiding PSU and cable mess.





High Gloss Black



High Gloss Red



High Gloss White



Satin Black



Satin Wine Red



Satin White



Satin Fir Green



Satin Golden Yellow



Satin Steel Blue



Real Wood Walnut

Acrylic dustcover included

Holds in every opening position & can be removed easily if needed.